

*No es solo
una sala
It's not just
a meeting room*

**ES SABER QUE TU EVENTO
SERÁ UN ÉXITO
IT IS KNOWING THAT YOUR
EVENT WILL BE A SUCCESS**

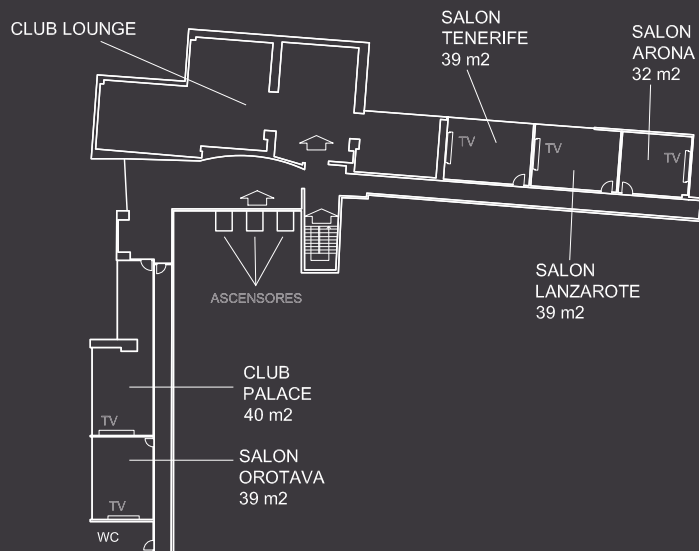
Queremos ponértelo fácil. Que llegues desde el aeropuerto a Montjuïc en 25 minutos sabiendo que tienes cerca todo lo que necesitas. Te ofrecemos 18 salas adaptables en las que caben de 10 a 1.000 personas, y un equipo que cuidará hasta el último detalle para hacer de tu evento una experiencia única.

**Creamos momentos extraordinarios.
Crowne Plaza Barcelona lo hace posible.**

Let us make it easier for you. In less than 25 minutes you will arrive from the airport to the Montjuïc quarter where all you require is near. With a total of 18 flexible meeting spaces with capacities from 10 up to 1000 people and a dedicated team, focused in taking care of every single detail of your event will assure you an unforgettable experience.

**We create extraordinary moments.
Crowne Plaza Barcelona makes it possible.**

A



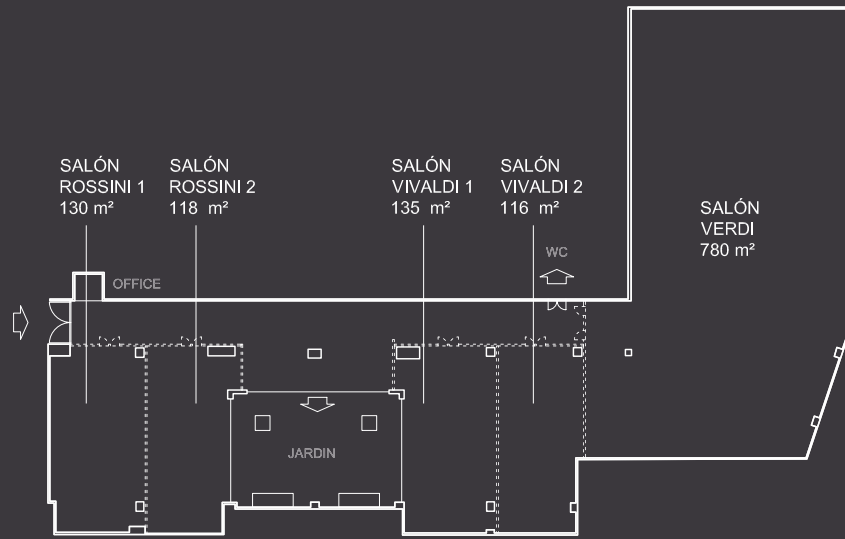
SALAS, DIMENSIONES Y CAPACIDADES MEETING ROOMS, MEASUREMENTS & CAPACITIES

Planta Floor	Sala Room	Luz natural Day Light	Superficie Surface		Dimensiones		Theater	Classroom	Cabaret	Board	U shape	Banquet	Buffet	Cocktail
			sqm	sqf	mts. L x W x H	Dimensions feet L x W x H								
A	Club Palace	Y	40	430	7,6x5,3x2,3	25x17.30x7.54	-	-	-	10	-	-	-	-
	Orotava	Y	39	420	7,2x5,2x2,3	23.60x17.10x7.54	20	15	-	15	15	-	-	-
	Tenerife	Y	39	420	7,4x5,3x2,3	24.30x17.30x7.54	20	15	-	15	15	-	-	-
	Lanzarote	Y	39	420	7,4x5,3x2,3	24.30x17.30x7.54	20	15	-	15	15	-	-	-
	Arona	Y	32	344	6x5,3x2,3	20x17.30x7.54	20	15	-	15	15	-	-	-
0	Verdi	N	780	8395	39x19,4x5,4	128x63.60x17.50	900	600	380	110	120	750	600	1000
	Vivaldi 1+2	Y	250	2690	16,3x15,3x3,2	53.50x50x10.30	230	140	130	70	50	200	150	250
	Vivaldi 1	Y	135	1248	16,3x8x3,2	53.50x26x10.30	100	75	60	35	35	100	60	120
	Vivaldi 2	N	116	1453	16,3x7,4x3,2	53.50x27.10x10.30	100	75	60	35	35	100	60	120
	Rossini 1+2	Y	250	2690	16,2x15,5x3,2	53.10x50x10.30	230	140	130	70	50	200	150	250
	Rossini 1	N	130	1399	16,2x8,3x3,2	53.10x27.20x10.30	100	75	60	35	35	100	60	120
	Rossini 2	Y	118	1270	16,2x7,2x3,2	53.70x23.60x10.30	100	75	60	35	35	100	60	120

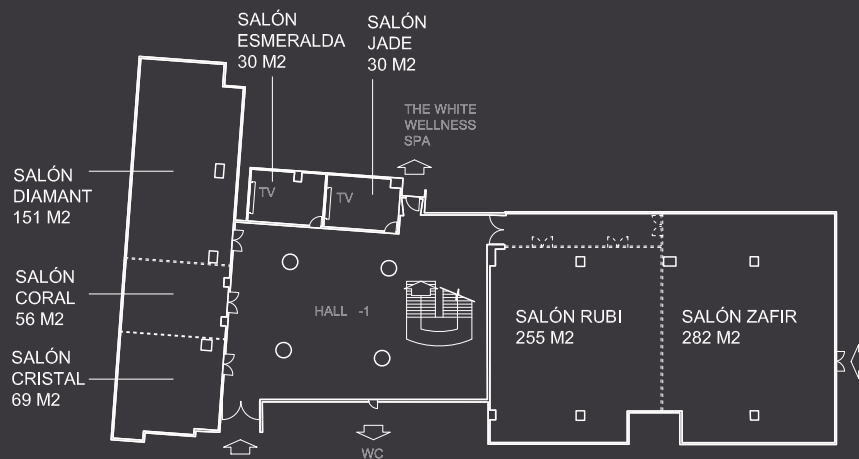


Garden

0



-1



Diamant



Hall -1

SALAS, DIMENSIONES Y CAPACIDADES MEETING ROOMS, MEASUREMENTS & CAPACITIES

Planta Floor	Sala Room	Luz natural Day Light	Superficie Surface		Dimensiones Dimensions		Theater	Classroom	Cabaret	Board	U shape	Banquet	Buffet	Cocktail
			sqm	sqf	mts. L x W x H	feet L x W x H								
-1	Rubí	N	255	2745	16,9x14,8x2,9	55.40x48.60x9.50	230	140	130	60	50	200	140	250
	Zafir	N	282	3035	19,9x14,9x2,9	65.30x49x9.50	250	160	130	60	50	220	180	270
	Rubí + Zafir	N	537	5780	29,8x16,9x2,9	97.70x55.40x9.50	600	250	180	90	90	560	450	700
	Diamant	N	151	1625	17,3x9,1x3	56.80x29.70x9.80	120	90	100	50	50	120	120	180
	Coral	N	56	603	6,3x9,1x3	20.60x29.70x9.80	40	30	36	25	25	30	30	60
	Diamant + Coral	N	207	2228	22,6x9,1x3	74.60x29.70x9.80	150	110	130	60	70	175	140	200
	Cristal	N	69	743	8,4x9,1x3	27.60x29.70x9.80	70	40	50	25	25	60	60	80
	Coral - Cristal	N	125	1345	14,7x9,1x3	48.30x29.70x9.80	120	60	80	34	40	100	80	125
	Diamant + Coral + Cristal	N	276	2970	32x9,6x3	105x29.70x9.80	220	180	170	70	80	225	200	300
	Jade	N	30	323	6,5x4,6x2,3	21.30x15x7.50	16	10	-	10	10	-	-	-
	Esmeralda	N	30	323	6,5x4,6x2,3	21.30x15x7.50	16	10	-	10	10	-	-	-